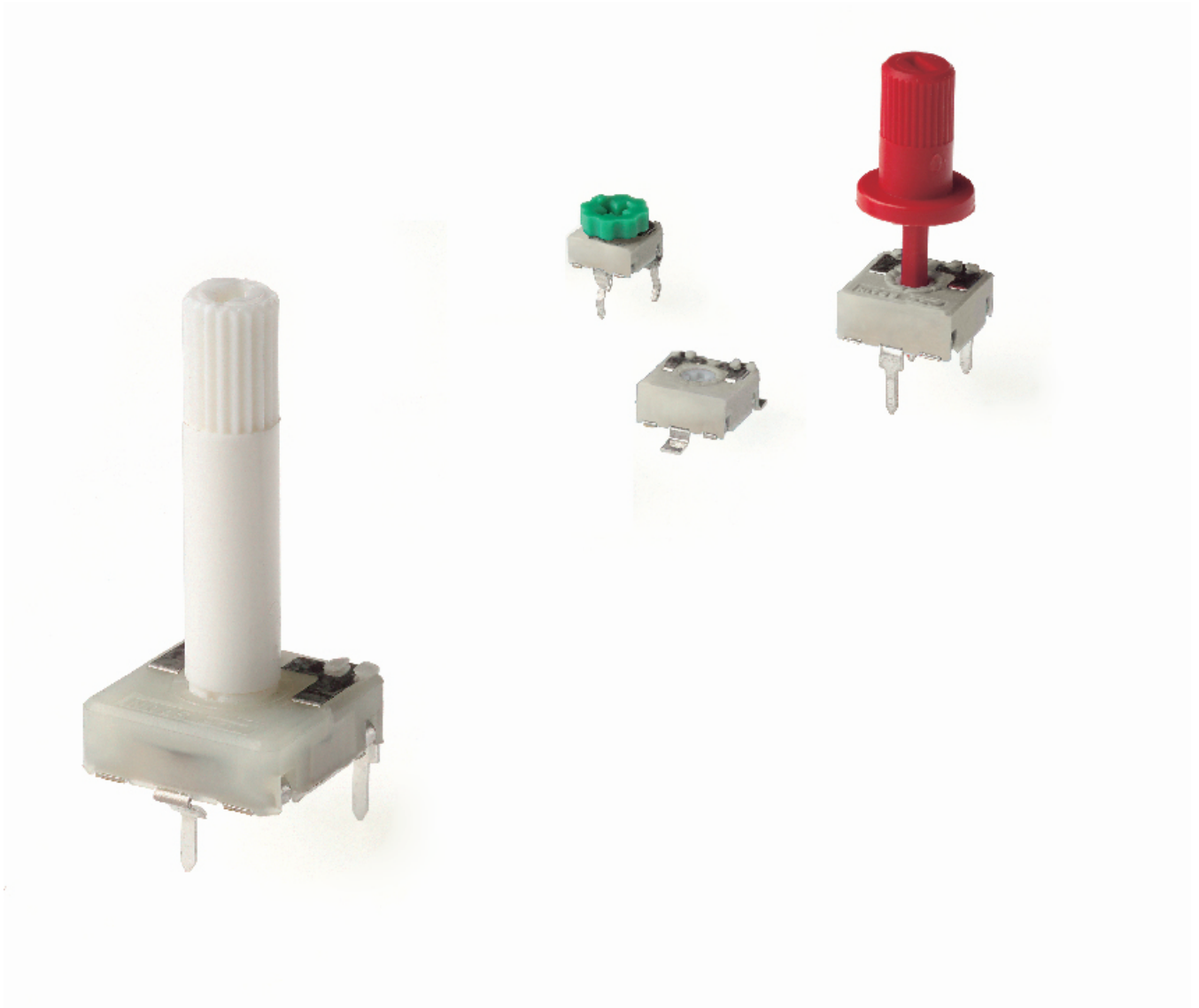


**Rotary
Switches**





**COM CA6 // COM CA9 // COM CA14
COM MCA9 // COM MCA14**

ACP's Rotary switches are based on the design of the potentiometers: plastic housing with protection type IP 5 (dust-proof). They have one input and two possible outputs. The commutating angle between outputs can be customized.

Rotary switches are available in all different models already existing for the CA and MCA potentiometers: 6, 9 and 14mm in carbon technology. On request, also in 9 and 14mm in Cermet: CE and MCE. Please, refer to those sections to choose the external configuration of your switch.

Thumbwheels and shafts can be provided either separately or already inserted in the switch.

Our switches can be manufactured in a wide range of possibilities regarding:

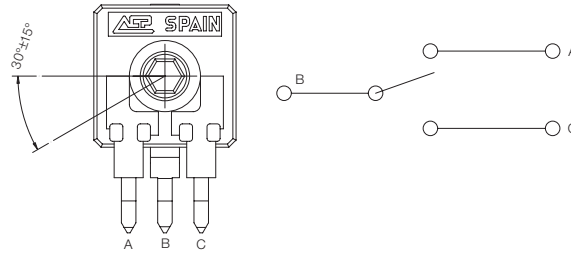
- Positioning of the wiper (the standard is at 50%).
- Housing and rotor color.
- Mechanical life.
- Pause effect (recommended for each possible circuit position).
- Self-extinguishable plastic parts, according to UL 94 V-0.
- Switching angle.

Applications

- Dimmers.
- Telecommunications (antenna control).

Electric function

The three terminals B, A and C are equivalent to one input and two outputs, as shown in the figure. The middle terminal (or B) is used to switch between positions. The switching angle at each end is $30^\circ \pm 15^\circ$ by default. It can be customized. By default, the housing will be neutral color with the marking in black.



Electric Specifications

	COM CA6	COM CA9	COM CA14	COM MCA9	COM MCA14
Power ratio	15V / 12mA	24V / 15mA	24V / 15mA	24V / 15mA	24V / 15mA
Resistance at ON position	$\leq 5 \Omega$	$\leq 5 \Omega$	$\leq 5 \Omega$	$\leq 5 \Omega$	$\leq 5 \Omega$
Dielectric strength	600 V	1500 V	1500 V	1500 V	1500 V
Insulation resistance	100 M Ω	100 G Ω	100 G Ω	100 G Ω	100 G Ω
Mechanical life (more on request)	1.000 cycles	1.000 cycles	1.000 cycles	1.000 cycles	1.000 cycles
Switching angle in "ON" position	$30^\circ \pm 15^\circ$	$30^\circ \pm 15^\circ$	$30^\circ \pm 15^\circ$	$30^\circ \pm 15^\circ$	$30^\circ \pm 15^\circ$
Operating temperature	-25°C ... +70°C	-25°C ... +70°C	-25°C ... +70°C	-25°C ... +70°C	-25°C ... +70°C

These are standard features; other specifications can always be studied on request. For details on Cermet switches, please inquire.

Mechanical Specifications

ELECTRIC	COM CA6	COM CA9	COM CA14	COM MCA9	COM MCA14
Angle of rotation (mechanical)	$235^\circ \pm 10^\circ$	$240^\circ \pm 5^\circ$	$265^\circ \pm 5^\circ$	$240^\circ \pm 5^\circ$	$265^\circ \pm 5^\circ$
Wiper torque	< 2Ncm	< 2Ncm	< 2,5 Ncm	< 2Ncm	< 2,5Ncm
Max. stop torque	4 Ncm	5 Ncm	10 Ncm	5 Ncm	10 Ncm
Max. push/pull on rotor	9,8 N	40 N / 50 N	50 N / 25 N	40 N / 50 N	50 N / 25 N

COM HOW TO ORDER

ACP's switches follow the same configuration as the potentiometers' in previous sections of this catalogue. You have to add the word COM to the configuration of your choice, as well as the switching angle you need if it is not the standard: 30°±15°. Features regarding resistance value, taper and tolerance on the potentiometers are ignored. Examples:

From CA9: COMCA9MH2,5 2DT SNP PI WT9005-BA (switch in configuration CA9MH2,5 with 2 detents, terminals with snap in, wiper at CCW position, and white shaft reference 9005 already inserted).

Standard features

Series	Rotor	Model	Packg	Ohm value	Taper	Tol	Life
1	2	3	4	5	6	7	8
COM	CA9	M	H2,5				

Extra features

Track	Collector	Terminals	Housing	Rotor	Wiper position	Lin
9	10	11	12	13	14	15
		2DT	SNP		PI	

Assembled accessory

Assembly	Ref #	Color	Flam.
16	17		
WT	9005	-BA	

From CA14: COMCA14PV15 45°±15° (switch in configuration CA14V15, switching angle at 45°).

Standard features

Series	Rotor	Model	Packg	Ohm value	Taper	Tol	Life
1	2	3	4	5	6	7	8
COM	CA14	P	V15				

Extra features

Track	Collector	Terminals	Housing	Rotor	Wiper position	Lin
9	10	11	12	13	14	15

Assembled accessory

Assembly	Ref #	Color	Flam.
16	17		

Specifications on this catalogue are for reference only; they are subject to change without notice.